

Get more out of your plant!

Discover the future of VRM systems with our cutting-edge AI technology.

Our solutions are designed to enhance the efficiency of your grinding plant.

With our GPpro module "Optimization with Artificial Intelligence", you can upgrade your mill to the next level.

Boost your profitability by increasing your production rate while simultaneously reducing costs through lower energy consumption and extended lifetime of wear parts by reducing vibration levels.

Join us in revolutionizing the cement industry and reducing CO₂ emissions.

Elevate your production with artificial intelligence.



GEBR. PFEIFFER



Optimize
your parameters to reduce specific power consumption and increase production rate.

Predict
changes in mill performance, vibration levels and product fineness.

Assist
your operator at all times.

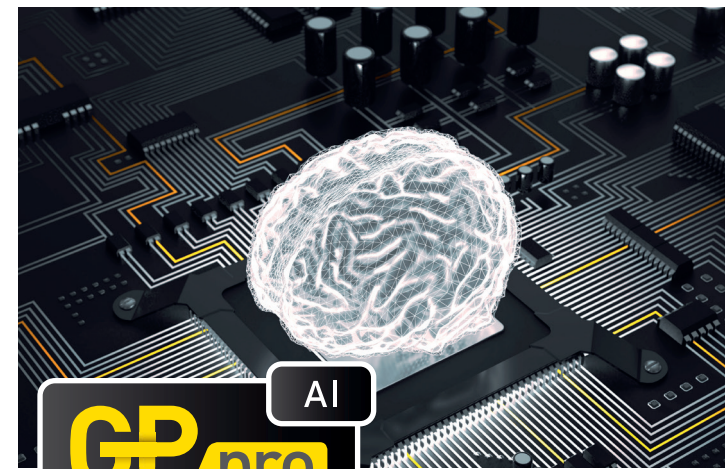


Get in touch with our experts.
Scan this QR Code and upgrade your VRM now!



sales@gebr-pfeiffer.com

Gebr. Pfeiffer SE
Barbarossastr. 50-54
67655 Kaiserslautern, Germany
+49 631 4161 0



GP AI **pro**

Module: Optimization with Artificial Intelligence

Make your Pfeiffer mill more intelligent, sustainable and efficient.

Use the full potential of your mill with our **field-proven** GPpro AI



Case I

MVR 1800 C-4

Parameters:

Table speed, feed rate, hydraulic tension pressure, temperature, gas flow

Results:

In this case, the client achieved a **12% reduction in specific power consumption** while consistently maintaining quality within target – compared to standard operation.

12% reduction in specific power consumption.



Case II

MVR 2500 C-4

Parameters:

Table speed, feed rate, hydraulic tension pressure, temperature, gas flow

Results:

Our client was able to increase the **production rate by 23%** while simultaneously reducing the specific power consumption by 6%.

23% increase in production rate.



Case III

MVR 6000 C-6

Parameters:

Feed rate, hydraulic tension pressure, temperature, gas flow, water injection

Results:

On an already optimized mill, the AI was able to **increase the production rate by 5%** and the specific power consumption was **reduced by 4%**.

Large mills, large savings.

